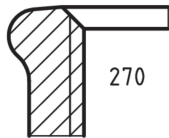
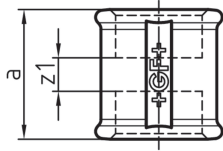
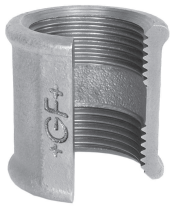


**270**  
**Socket, ISO/EN M2**

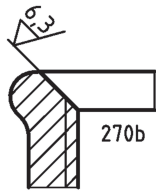
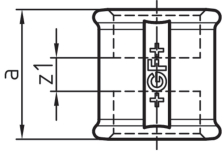
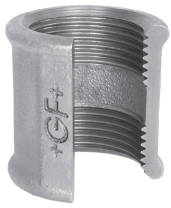
ST ... these types of fittings are made from steel (galvanised finish = electroplated) and not suitable for drinking water installations. Steel parts are hexagonal instead of beaded.



EN	Dim. (inch)	Black Code	Galvanised Code	a (mm)	s (mm)	z1 (mm)
ST •	1/8	770 270 101	770 270 201	25	17	11
ST •	1/4	770 270 102	770 270 202	27	19	7
•	3/8	770 270 103	770 270 203	30		10
•	1/2	770 270 104	770 270 204	36		10
•	3/4	770 270 105	770 270 205	39		9
•	1	770 270 106	770 270 206	45		11
•	1 1/4	770 270 107	770 270 207	50		12
•	1 1/2	770 270 108	770 270 208	55		17
•	2	770 270 109	770 270 209	65		17
•	2 1/2	770 270 110	770 270 210	74		20
•	3	770 270 111	770 270 211	80		20
•	4	770 270 112	770 270 212	94		22

**270b**  
**Socket, equal**

Is usually not supplied as a separate piece.  
 One side with larger chamfer, thread = fastening thread to ISO 228.



EN	Dim. (inch)	Code	a (mm)	z1 (mm)
-	1/2		36	10
-	3/4		39	9
-	1		45	11
-	1 1/4		50	12
-	1 1/2		55	17
-	2		65	17